



SHENZHEN JIAYU ELECTRONICS.,LTD

ADD: 4/F-3/F NO. 20 Fengye Five Rd,Fenghuang Village,  
Fuyong Street Bao'an District,Shenzhen

TEL: 0755-89802356 Web: www.jiayuelec.com



— www.jiayuelec.com —



## COMPANIES TO INTRODUCE

Shenzhen Jiayu Electronics Co., Ltd. is a professional manufacturer of power adapters located in Shenzhen. The company specializes in the production of Travel charger, Wall charger, Multi-functions Wireless chargers, Charging set, Car charger and , etc. We has passed ISO9001:2015 quality management system certification, and obtained GS/FCC/CE/KC/ROHS/REACH/ETL/CB and other national safety certification, ERP energy efficiency level 6 certification, and through the BSCI European enterprise recognition.....So that the products can be sold all over the world without any obstacles.

We own many high-quality customers like : Philips,Hama,Tzumi,ISY,Lidl. So you can completely believe in our ability to meet your product requirements. Our charging power cover from Min 5W, 10W to Max 100W, 140W. We got Chinese/Japanese/Korean/U.S/EU/UK/Australian.....All standard power adapter, and wireless chargers with multi-functions with socket and clock.

Hold 6 production lines equipped with 100+ skilled workers. Daily production capacity can reach 20,000 pcs. Over 10 high-end engineer to strictly controls the design and quality of products. Since the establishment, we has attached great importance to R&D and invested a lot of fund in R&D. Leading by 3 senior Engineer, our R&D team is a dynamic and innovative professional team with wisdom, rigor and harmony. 10-15 new products are upgated mouthly.

Always hold our business philosophy—Pursuit of the excellence, Adhere to the quality. Visit [www.sz-jiyu.com](http://www.sz-jiyu.com) for more detail..





 WIRELESS CHARGING 



## Model: W88

Material : ABS+Silicone  
Color: ○ ● Customized Colors

Power Input : AC110V-240V 50/60Hz 10A 10A  
AC Output:AC110V-240V 50/60Hz 1100W(Max)  
USB1/2 Output:5V2A(Max)

Wireless Output: 5W/7.5W/10W  
Type-C Output: PD18W  
USB1 +USB2+Wireless Total Output : 10W(Max)  
Size:185\*129\*160MM      Weight : 621g





## Model: W89

Material : ABS+Silicone

Color: ○ ● Customized Colors

Power Input : AC I 10V-240V 50/60Hz 10A 10A

AC Output: AC I 10V-240V 50/60Hz 1100W(Max)

USB1/2 Output: 5V2A(Max)

Wireless Output: 5W/7.5W/10W

Type-C Output: PD18W

USB1 + USB2 + Wireless Total Output : 10W(Max)

Size: 185\*129\*160MM

Weight : 621g



## Model: W90

Material: ABS+ Polymer Battery+ Silicone

Color: ○ ● customized

Wireless Charging Output: 10 W (Three Coil)

Type-C Input PD (Station pad) : 5V~12V/ 3A~1.5A

**Power Bank Data :**

Battery Capacity : 5000mAh

Micro Input : 5V/2A USB I&2 output: 5V/2A

Charging distance: ≤5mm

Need 36W Adaptor





## Model: W100

Material : ABS    Color: ●

Type-C Input : 5V3A, 9V/2.22A, 12V/1.5A

Type-C Output : 5V/2A (Max.)

USB-A Output: 5V/2A (Max.)

Wireless Output: 10W (Max.)

A+C Output: 10W    Total output: 20W(Max.)

Size: 170\*143\*50mm

### Features :

1. large screen & two alarm clock
2. large alarm clock snooze button ,if you wanna sleep a few minutes longer
3. simply operate , each button for single function
4. ODM your own LED light flash logo
5. if power off , no need to re-set the alarm clock & data





## Model: AC21

Material: ABS  
 Color:   customized

Power input: AC 110V-240V AC 50/60Hz / 10A  
 Type-c Output (PD 18W): 5V~12V / 3A~1.5A  
 USB output 1: 5V/2A USB output 2: 5V/2A  
 (Two USB Total output: 10W)  
 Wireless output: 10W

Socket: Dual US type socket  
 Charging type: Wireless, one-to-one, dual coil  
 Size: 126\*87\*108mm Charging distance: ≤5mm



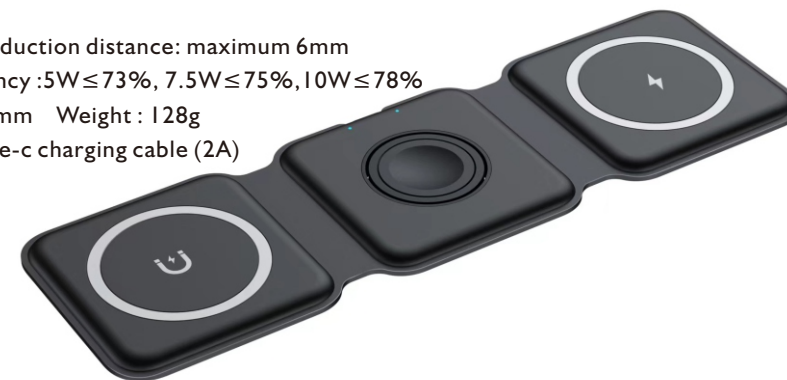
## Model: S2

Product material: ABS + Silicone  
 Color:   Customized Colors



Type-C Input: 9V/2.7A  
 Magsafe Wireless Output: 5V/1A, 9V/1.65A Max 15W  
 Wireless output: Max 3W (Earphone)  
 Watch charger Output: MAX 2.5W  
 Total Output: 15W + 3W + 2.5W = 20.5W (MAX)

Wireless charging induction distance: maximum 6mm  
 Transmission efficiency: 5W ≤ 73%, 7.5W ≤ 75%, 10W ≤ 78%  
 Size: 247\*74.5\*7.5mm Weight: 128g  
 Cable: 1 meter Type-c charging cable (2A)





## Model: GL-00

Size/Weight: 119.5\*9.5\*8.4cm/1.15Kg  
 Battery: Li-ion 18650  
 Capacity: 98Wh  
 AC Rated Power: 100W  
 Input/Voltage: DC 12V-20V, Solar 12V-20V  
 Input/Current: Max 40W

AC Output /Voltage AC 230V/110V  
 USOutput: USB1 QC3.0 5-12V (Max 18W)  
 USB2 QC3.0 Output: 5-12V (Max 18W)  
 USB1 +USB2 Output: 5V/4A  
 TYPE-C Output: 5-20V (Max 60W )

The output waveform is pure sine wave  
 Battery cycle times ≥800  
 Adapter specifications:DC 18V 2.5A  
 LED power 1W  
 2 LED light strips /4 modes: energy saving/strong light/flashing /SOS With 12W Adapter



## Model: GL-01

Size/Weight: 20\*17.5\*14cm CM/4.7Kg  
 Battery: Li-ion 18650  
 Capacity: 300Wh  
 AC Rated Power: 300W  
 Input/Voltage: DC 12V-25V, Solar 12V-25V  
 Input/Current: Max 65W

AC Output /Voltage: AC 230V/110V  
 USB/DC Output DC Port : ( 15V/5A )  
 USB1/2 Output: ( 5V/2.1A )  
 USB PD Output: 5-12V(Max 18W)  
 TYPE-C Output: 5-20V(Max 60W )  
 Cigarette Output: 15V/10A

The output waveform is pure sine wave  
 Battery cycle times ≥800  
 Adapter specifications: DC 19V-3.42A&17V-3.8A  
 LED power 10W  
 2 LED light strips /4 modes: energy saving/strong light/flashing /SOS With 65W Adapter



Excellent for Outdoor Working,  
Hiking, BBQ, Fishing and other  
Outdoor activities!



10000mAh

**2-in-1 LED Flood Work Light  
Power Bank 10000mAh**

0~90-degree tripod rotation structure



## Model: LP10

- Capacity : 10000mAh
- Battery type: 18650 Li-on battery 2500 mAh \*4pcs
- Materials: ABS+Aluminum alloy.
- Input & Output :5V 2A
- Charging time : 6.5 hours
- Working time: 12 ~220 hours ;
- One kickstand to hold for adjusting directions.
- Operating temperature -15°C+50°C
- Weight: 332g
- Size: 116\*120\*43mm
- Lantern output power: 7.2W for Both White  
Light & Warm Light
- LED Lighting Mode: 15, 5 each on 3 different color  
temperature (Medium/Low/High/Strobe/SOS)





## Model: JY010



Material : PC  
Input : 12-24V  
Output : PD(5V3A) USB(5V3A)  
Power : 15W  
Features: Intelligent identification IC

## Model: JY015

Material : PC  
Input : 12-24V  
Output : USB1 (5V3A, 9V3A, 12V1.5A)  
USB2(5V2.4A)  
Power : 30W



## Model: JY016

Material : PC  
Input : 12-24V  
Output : USB1/2(5V2.4A)  
Power : 12W



## Model: JY018

Material : PC  
Input : 12-24V  
Output : PD(5V3A) USB(5V3A)  
Power : 15W





 **Qualcomm**  
Quick Charge 3.0

PD



## Model: JY019

Material : PC  
Input : 12-24V  
Output : USB1/3 (5V1A) USB2(5V2.1A)  
Power: 20W

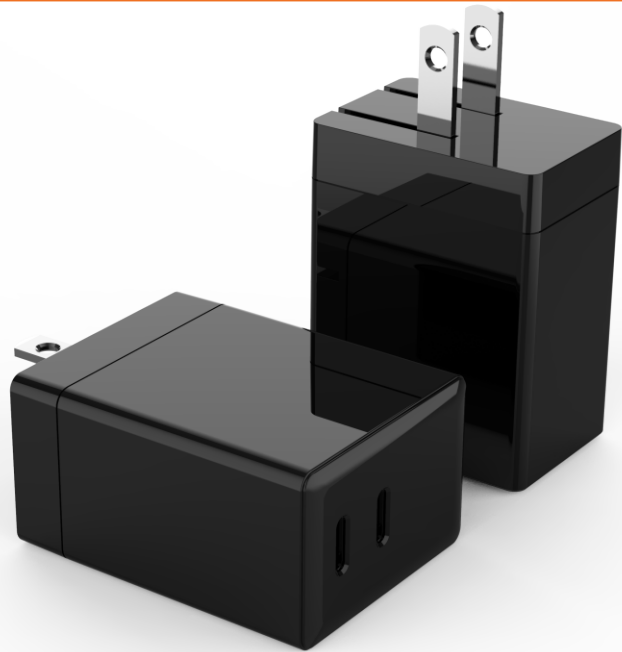
CE FC

## Model: JY023

Material : PC  
Input: 12-24V  
Output : PD(5V3A,9V2A,12V1.5A)  
          QC3.0(5V3A,9V2A,12V1.5A)  
Power: 36W

CE FC





## Model: JY886

### 2 Ports 45W Wall charger

input: 100-240v  
USB-C: 5V3A 9V2A 12V2A 15V1.67A 20V1.25A  
Total: 45W MAX



### A+C fast charge

input: 100-240v  
Output: USB-C 5V3A 9V2.22A 12V1.67A  
QC3.0 5V3A 9V2A 12V1.5A  
Total: 5V3A MAX



## Model: JY319



### PD 20W fast charge

input: 100-240v  
Output: QC3.0 5V3A 9V2A 12V1.5A





**Model: JY318**

### QC3.0 18W

input: 100-240v

Output: QC3.0 5V3A 9V2A 12V1.5A



### A+C 20W

input: 100-240v

Output: USB-C 5V3A 9V2.22A 12V1.67A

QC3.0 5V3A 9V2A 12V1.5A Total: 5V3A MA



### 5V-3.4A

input: 100-240v

Output: 5v-3.4a

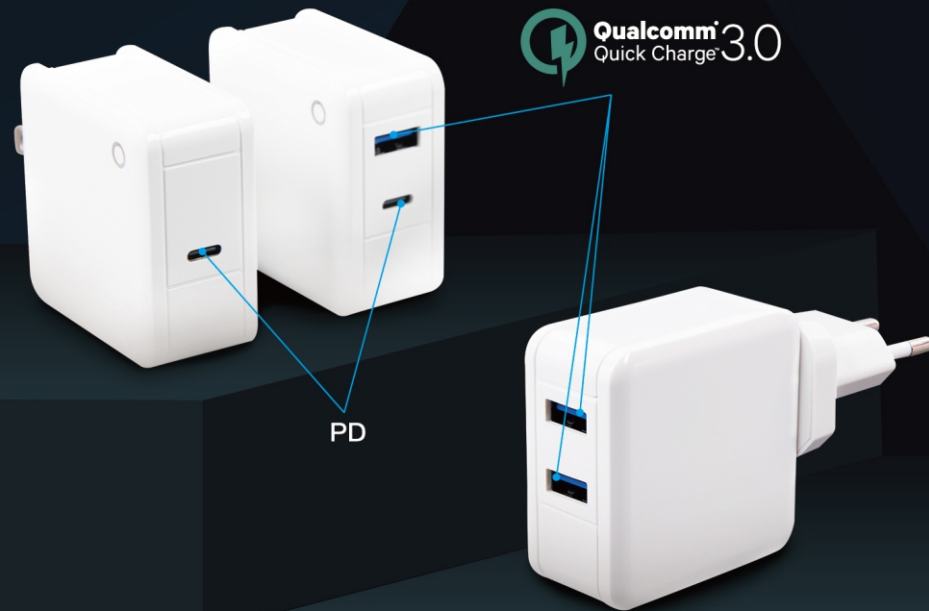


### PD 20W fast charge

input: 100-240v

Output: USB-C 5V3A 9V2.22A 12V1.67A





PD



**Model: JY418**



### Dual Ports QC3.0 18W+ 18W

(Can be equipped with UK/EU PLUG)

input: 100-240v

Output: QC3.0 5V3A 9V2A 12V1.5A

QC3.0 5V3A 9V2A 12V1.5A

Total:36W



### Single Type-C GAN

(Can be equipped with UK/EU PLUG)

input: 100-240v

Output: USB-C 5V3A 9V3A 12V3A 15V3A 20V3A

PPS : 3.3-11V 3.3-16V 3AA 60W

### PD20+QC18A+C 38W

(Can be equipped with UK/EU PLUG)

input :100-240v

Output : USB-C 5V3A 9V2.22A 12V1.67A

QC3.0 5V3A 9V2A 12V1.5A





**Model: JY518**



**65W Single Type-C Wall Charger**

(Can be equipped with UK/EU PLUG)

input : 100-240v  
 Output : USB-C 5V3A 9V3A 12V3A 15V3A 20V3.25A  
 PPS : 3.3-11V 3.3-16V 3AA 65W



**2A + C 20W Wall Charger**

(Can be equipped with UK/EU PLUG)

input : 100-240v  
 Output : QC3.0 5V3A 9V2A 12V1.5A  
 USB-C:5V3A 9V2A 12V2A 15V1.67A 20V1.25A  
 Total:45W MAX



**3 Ports 20W Wall charger**

(Can be equipped with UK/EU PLUG)

input: 100-240v  
 Output: usb-c 5V3A 9V2.22A 12V1.67A 20W  
 USB-A 5V3A

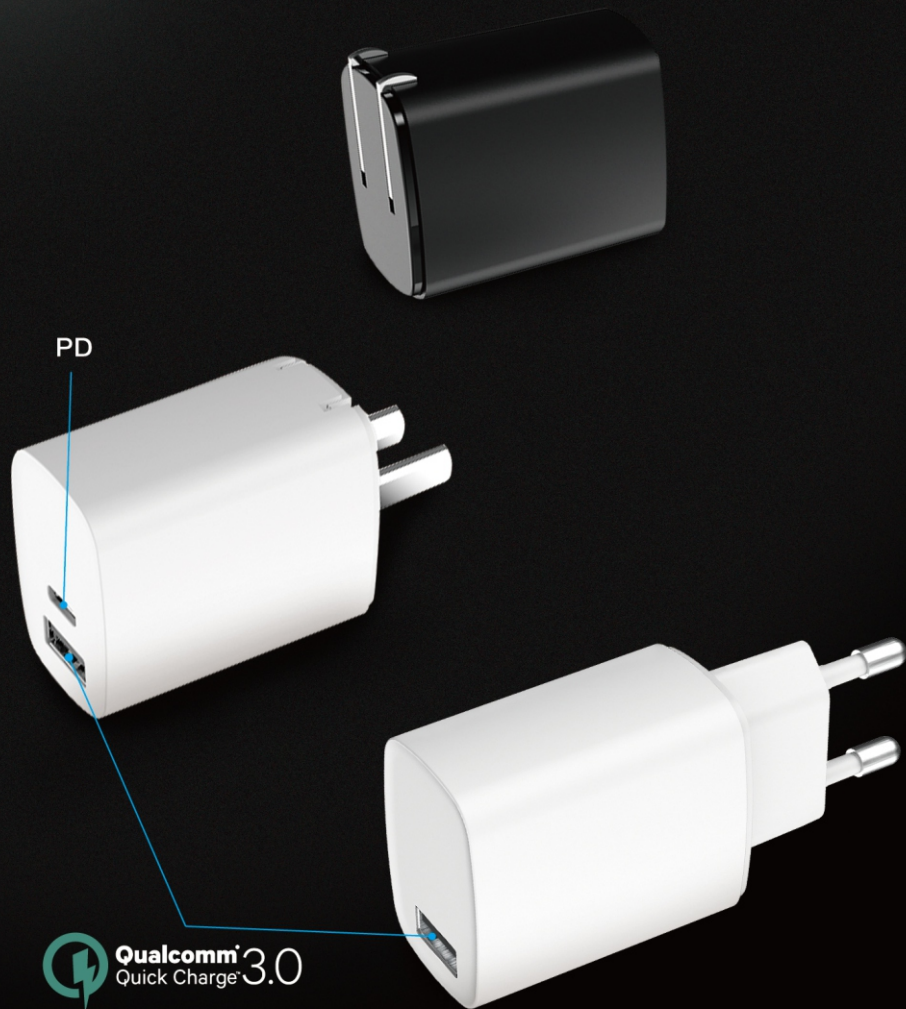


**3 Ports 45W Wall charger**

(Can be equipped with UK/EU PLUG)

input: 100-240v  
 Output : QC3.0 5V3A 9V2A 12V1.5A  
 USB-A1 + USB-A2:5V-2.4A  
 Total:45W MAX





**Qualcomm**  
Quick Charge 3.0

**Model: JY618**



### PD 20W fast charge

input : 100-240v  
OutputP : USB-C 5V3A 9V2.22A 12V1.67A



### A+C 20W

input : 100-240v  
Output : USB-C 5V3A 9V2.22A 12V1.67A  
QC3.0 5V3A 9V2A 12V1.5A  
Total : 5V3A MAX

### QC3.0 18W

input: 100-240v  
Output : QC3.0 5V3A 9V2A 12V1.5A



**PD 20W fast charge**

input: 100-240v

Output: USB-C 5V3A 9V2.22A 12V1.67A



**Model: JY427**

**3A+ IC 30W+3A 45W**

input : 100-240v

Output : USB-C PPS 3.3-11V/2.75A 3.3V-15V/2A  
PD3.0:5V3A 9V3A 12V2.5A 15V2A 30WAX  
US-BA1/UAB-A2/UAB-A3:5V2.4A 12W  
UAB-A1 +USB-A2+UAB-A3:5V3A 15MAX



**Model: JY416**



**PD 20W fast charge**

input 100-240v

Output: USB-C 5V3A 9V2.22A 12V1.67A



**Model: JY446**

**A+C 20w+ 15W 30W**

input: 100-240v

Output : usb-c 5V3A 9V2.22A 12V1.67A 20W  
USB-A 5V2.4A





## Model: JY433

### 30+30W双C 60W

input : 100-240v

Output : 5V3A 9V3A 12V3A 15V3A 20V3A

PPS:3.3-1.1V 3A 3.3V-20V 3A

Total:60W MAX



SHENZHEN JIAYU ELECTRONICS.,LTD

— www.jiayuelec.com —

## Model: JY827

### 30WGAN

input : 100-240v

Output : USB-C 5V3A 9V3A 12V2.5A 15V2A

PPS:3.3V-1.1V 3.3-1.6V 2A

